

Dispositivo di centraggio DCP63.1

Locator device DCP63.1

Caratteristiche principali:

- Design compatto
- Alta precisione di posizionamento
- Corpo in alluminio
- 4 possibilità di staffaggio (superiore, fronte e laterali)
- Boccole guida in acciaio rettificato
- Corsa stelo: 20, 40, 60 mm
- Alesaggio del cilindro pneumatico: 63 mm
- 2 fori di connessione G1/4"
- Finecorsa induttivo P+F (connessione M12x1)



Main characteristics:

- Compact design
- High accuracy of positioning
- Aluminum body
- 4 mounting areas (up, front and sides);
- Grinding steel guiding bush
- Rod stroke: 20, 40, 60 mm
- Pneumatic cylinder bore: 63 mm
- 2 feeding ports G1/4"
- Inductive proximity switch P+F (connection M12x1)


[PDF](#)

[3D Step](#)

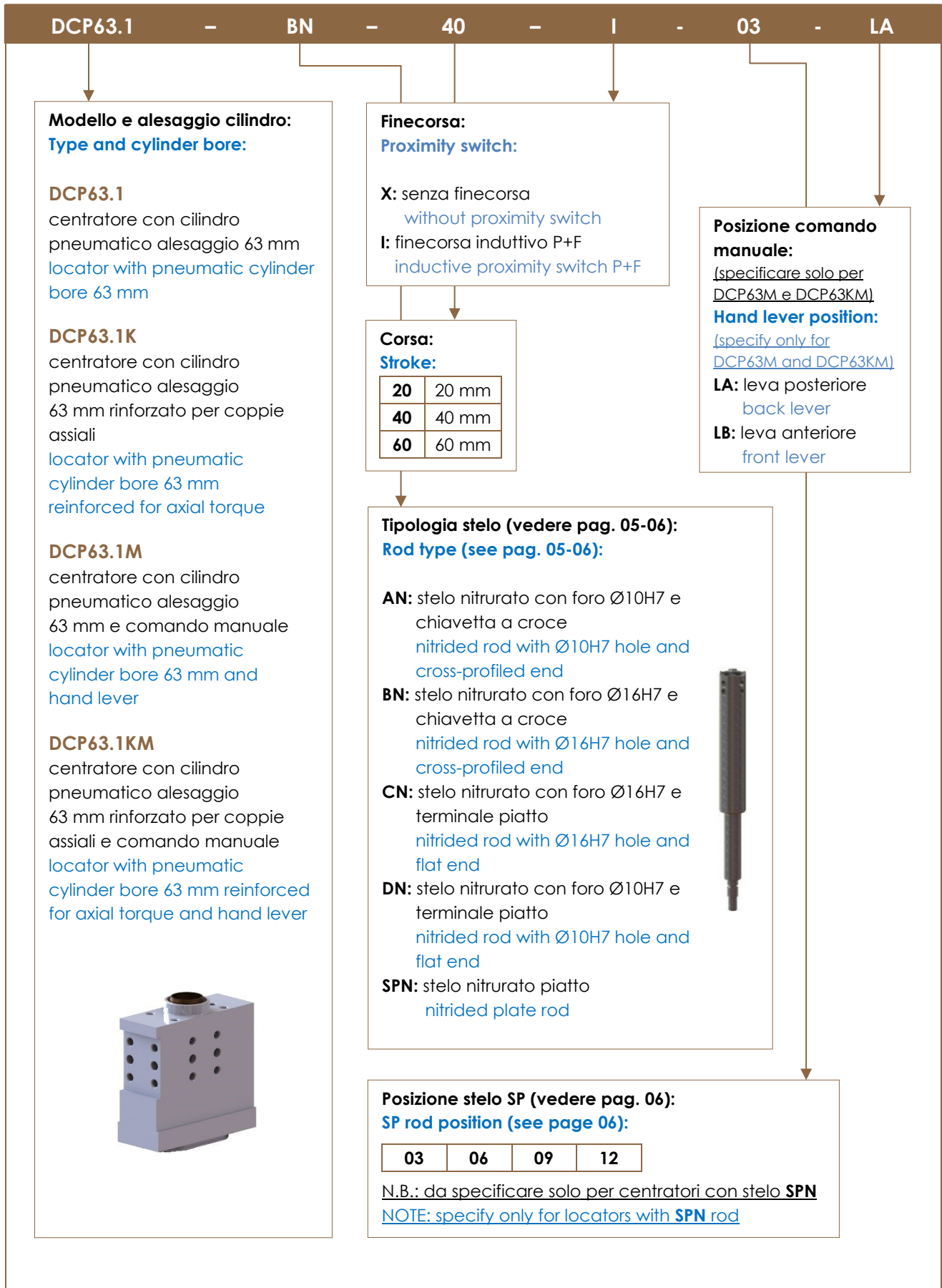
[Index](#)

Indice.

Index.

Pagina Page	Descrizione Description	
1	Caratteristiche principali Main characteristics	
2	Codice d'ordine Ordering example	
3	Pagina dimensionale Dimensional page	DCP63.1...
4		DCP63.1...M...
5 - 6	Tipologia steli / Rods type	
6	Schema finecorsa induttivo Diagram for inductive proximity switch	
7	Schema pneumatico / Pneumatic plan	
7	Proprietà / Properties	
7	Ricambi / Spare parts	
8	Note / Notes	

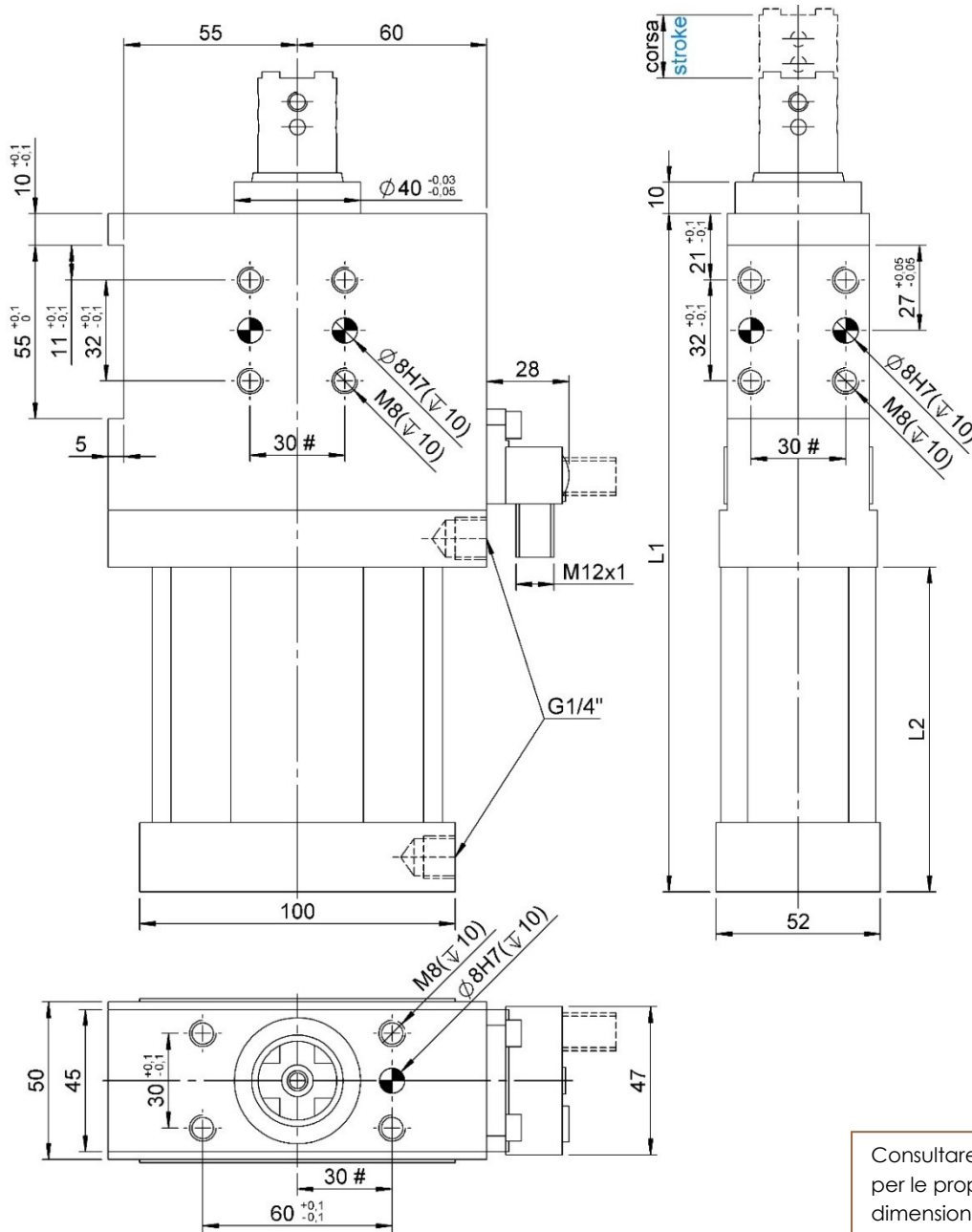
Codice d'ordine. Ordering example.





DCP63.1...

Centratore, D. 63, corsa 20/40/60 mm
Locator device, D. 63, stroke 20/40/60 mm



Consultare pag. 5-6
per le proprietà
dimensionali degli steli.
See page 5-6 for the
dimensional properties
of the rods.

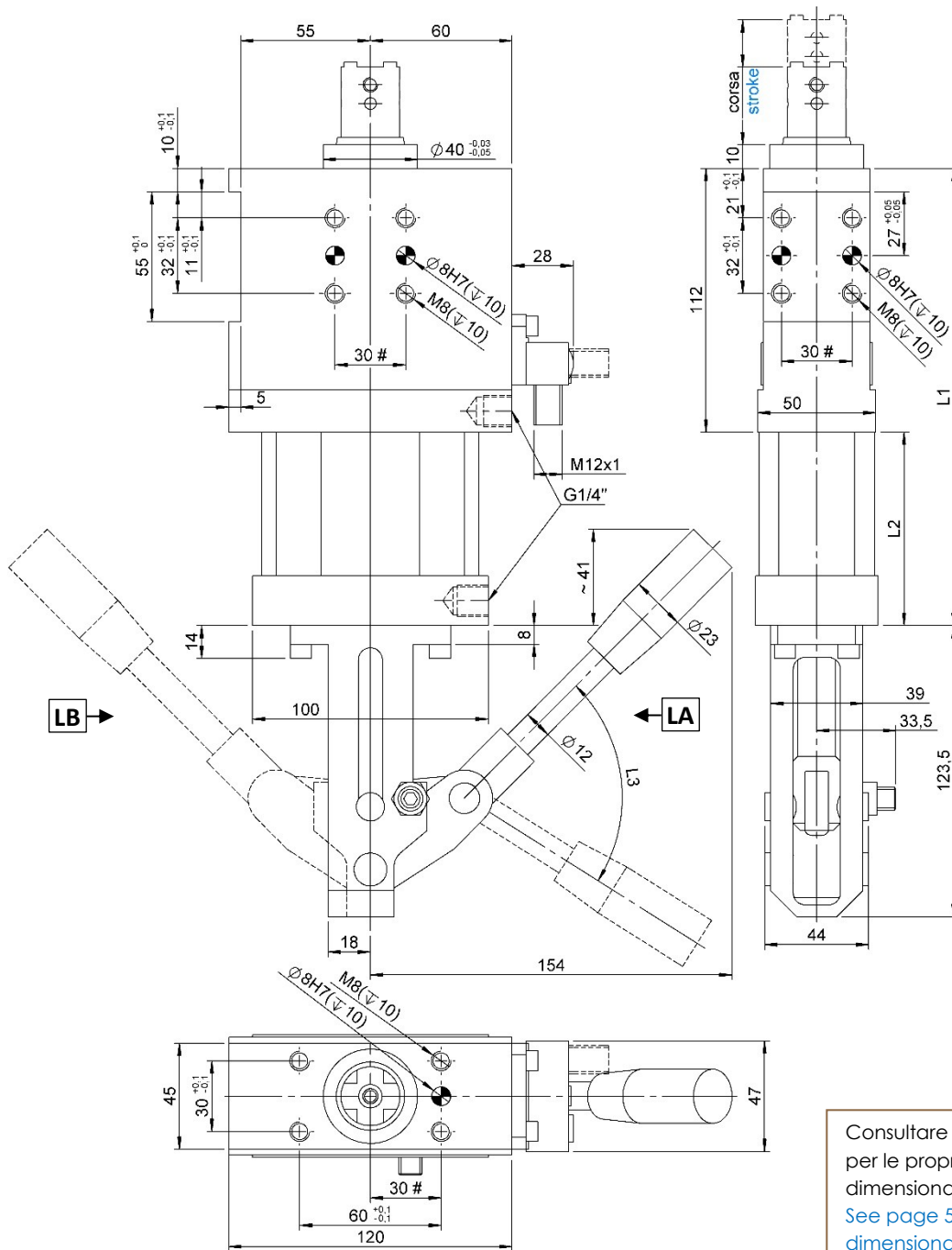
#Tolleranze: fori spina ± 0.02 , fori filettati ± 0.1
#Tolerances: dowel holes ± 0.02 , screw holes ± 0.1

Modello Type	Alesaggio cilindro Cylinder bore	Corsa stelo Rod stroke	L1	L2	Peso Weight	Consumo d'aria (5 bar) Air consumption (5 bar)
	[mm]	[mm]	[mm]	[mm]	[Kg]	[l]
DCP63.1...-20I	63	20	195	83	~ 2,8	~ 0,75
DCP63.1K...-20I					~ 2,9	
DCP63.1...-40I		40	215	103	~ 2,9	~ 1,45
DCP63.1K...-40I					~ 3,0	
DCP63.1...-60I		60	235	123	~ 3,0	~ 2,20
DCP63.1K...-60I					~ 3,1	



DCP63.1...M...

Centratore, D. 63, comando manuale, corsa 20/40/60 mm
Locator device, D. 63, hand lever, stroke 20/40/60 mm



#Tolleranze: fori spina ± 0.02 , fori filettati ± 0.1
#Tolerances: dowel holes ± 0.02 , screw holes ± 0.1

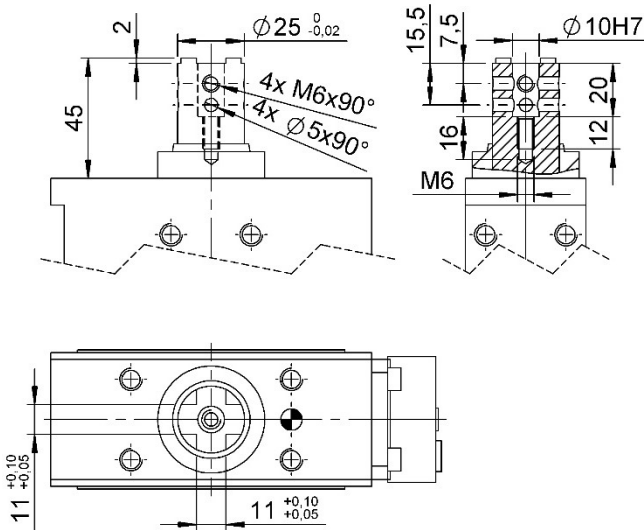
Consultare pag. 5-6
per le proprietà
dimensionali degli steli.
See page 5-6 for the
dimensional properties
of the rods.

Modello Type	Alesaggio cilindro Cylinder bore	Corsa stelo Rod stroke	L1	L2	L3	Peso Weight	Consumo d'aria (5 bar) Air consumption (5 bar)	
	[mm]	[mm]	[mm]	[mm]	[°]	[Kg]	[l]	
DCP63.1M...-20I-L...	40	20	194	82	26	~ 4,0	~ 0,70	
DCP63.1KM...-20I-L...						~ 4,1		
DCP63.1M...-40I-L...		40	40	214	102	47	~ 4,1	~ 1,40
DCP63.1KM...-40I-L...							~ 4,2	
DCP63.1M...-60I-L...		60	60	234	122	78	~ 4,2	~ 2,10
DCP63.1KM...-60I-L...							~ 4,3	

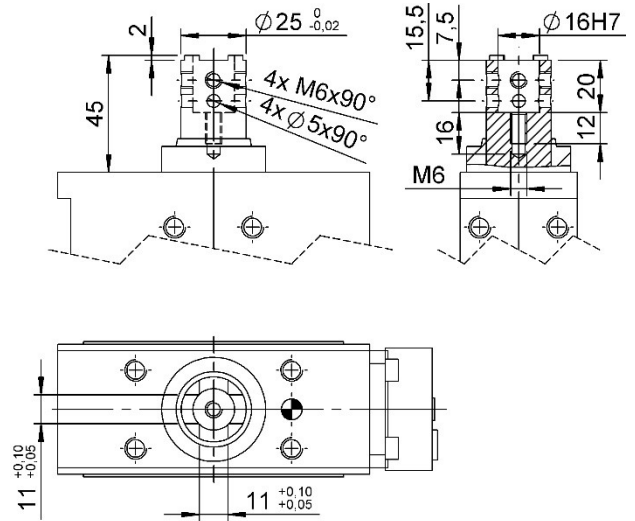


Tipologie Steli
Types of rods

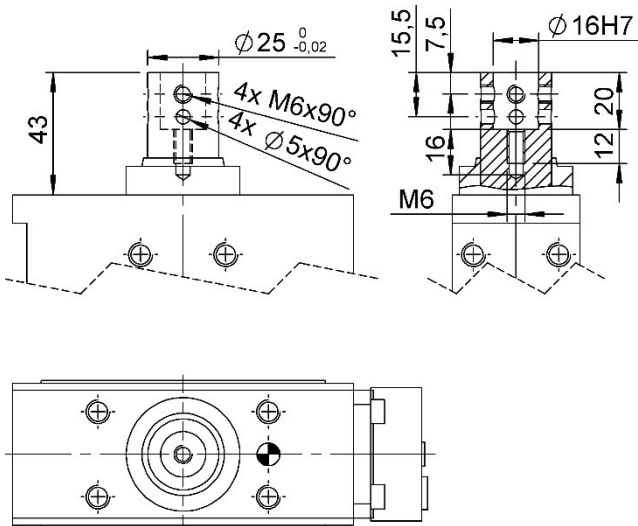
Typo **AN**
Type **AN**



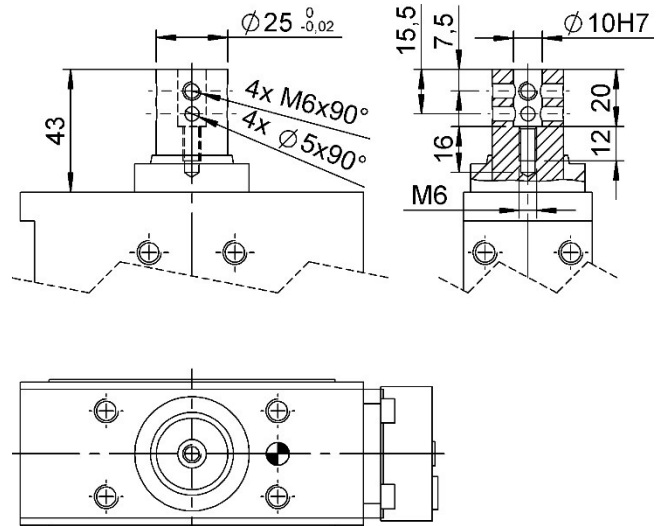
Typo **BN**
Type **BN**



Typo **CN**
Type **CN**



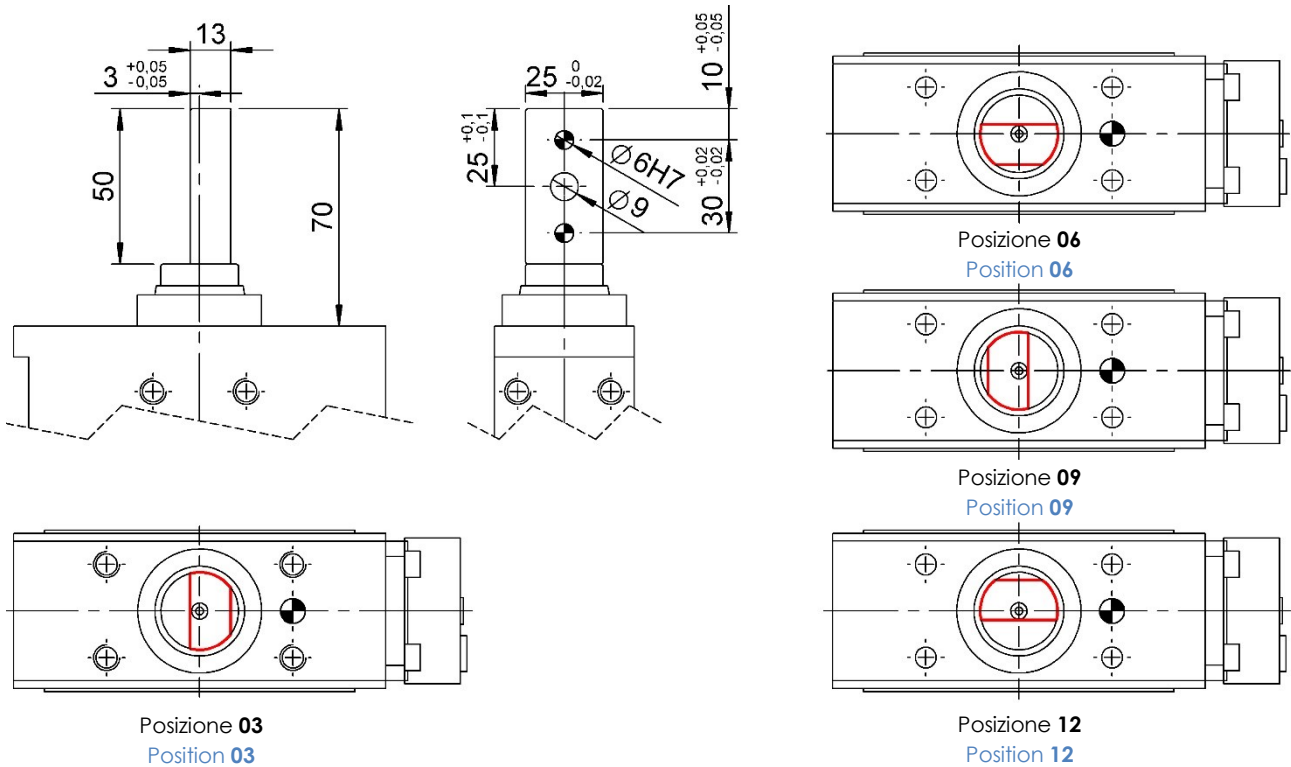
Typo **DN**
Type **DN**





Tipo **SPN**

Type **SPN**



Schema Finecorsa induttivo (06706/corsa/C).

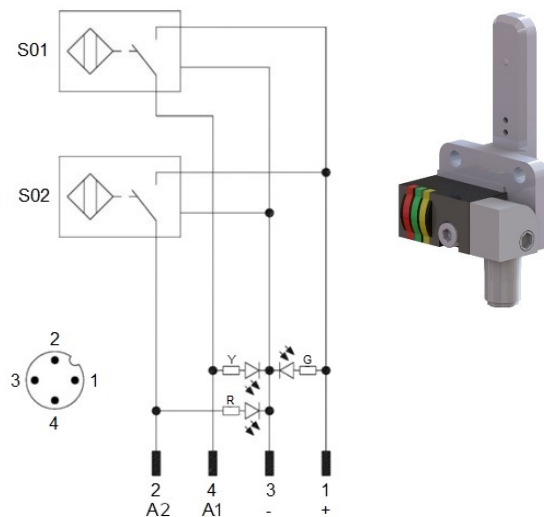
Diagram for Inductive proximity switch (06706/stroke/C).

Caratteristiche tecniche (P+F):

- Tipo di uscita: PNP;
- Tensione d'alimentazione: 10-30 VDC;
- Corrente max. di commutazione: 200 mA;
- Consumo di corrente: < 25 mA;
- Calo di tensione: < 2 V
- Campo di temperatura: -25° / 70° C.

Technical data (P+F):

- Output type: PNP;
- Feeding voltage: 10-30 VDC;
- Max. commutating current: 200 mA;
- Power supply: < 25 mA;
- Voltage drop: < 2 V;
- Temperature range: -25° / 70° C.



S01 = segnale d'apertura

S01 = opening signal

S02 = segnale di chiusura

S02 = closing signal

Y = LED giallo / yellow LED

G = LED verde / green LED

R = LED rosso / red LED

1 = filo marrone / brown wire

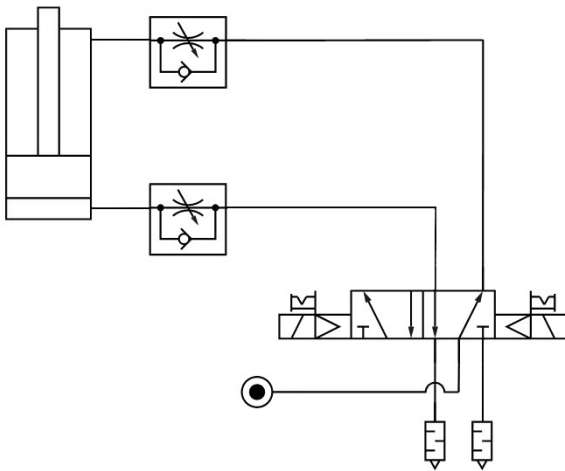
2 = filo nero / black wire

3 = filo blu / blue wire

4 = filo bianco / white wire

Schema pneumatico.

Pneumatic plant.



Modello Type	Consumo d'aria Air consumption (5 bar)	Consumo d'aria Air consumption (6 bar)	Pressione d'esercizio Working pressure
	[l]	[l]	[bar]
DCP63.1...-20I	~ 0,75	~ 0,90	2 – 8
DCP63.1K...-20I			
DCP63.1...-40I	~ 1,45	~ 1,75	
DCP63.1K...-40I			
DCP63.1...-60I	~ 2,20	~ 2,65	
DCP63.1K...-60I			
DCP63.1M...-20I-L...	~ 0,70	~ 0,85	
DCP63.1KM...-20I-L...			
DCP63.1M...-40I-L...	~ 1,40	~ 1,70	
DCP63.1KM...-40I-L...			
DCP63.1M...-60I-L...	~ 2,10	~ 2,55	
DCP63.1KM...-60I-L...			

Proprietà.

Properties.

Modello Type	Forza di spinta Pressing force (5 bar)	Forza di trazione Tensile force (5 bar)	Spinta radiale statica max. Static side force max.	Momento torcente max. Max. torque	Angolo di torsione max. Torsion angle max.
	[N]	[N]	[N]	[Nm]	[°]
DCP63.1...	1500	1400	200	4	± 0,1°
DCP63.1K...				6	± 0,1°

Ricambi.

Spare parts.

# Kit	Immagine Picture	Descrizione Description	Articolo Article
Finecorsa Proximity switch		Finecorsa induttivo P+F Inductive proximity switch P+F	06706/corsa/C 06706/stroke/C
Kit guarnizioni Seals kit		Guarnizioni cilindro pneumatico per DCP63.1 / DCP63.1K Pneumatic cylinder seals for DCP63.1 / DCP63.1K	SCR-DCP63.1
		Guarnizioni cilindro pneumatico per DCP63.1M / DCP63.1MK Pneumatic cylinder seals for DCP63.1M / DCP63.1MK	SCR-DCP63.1M

